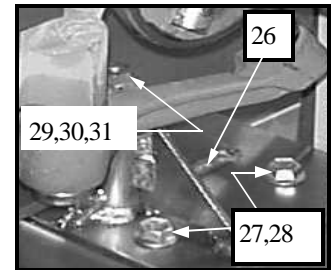
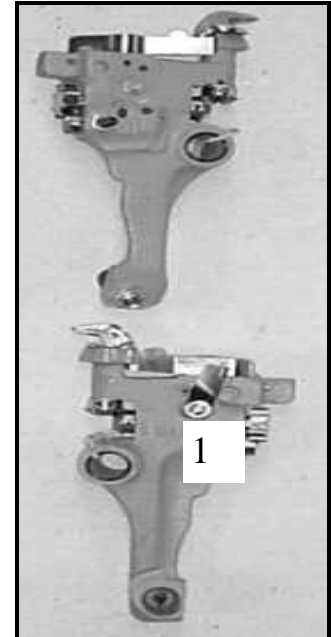
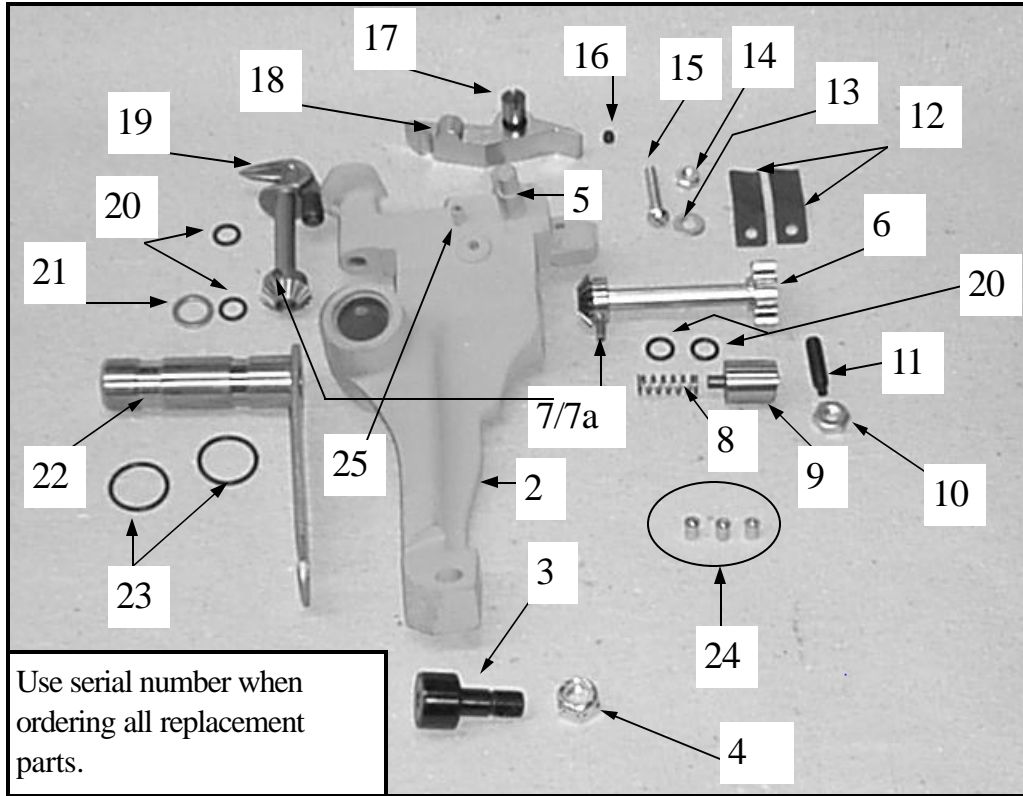


KNOTTER HEAD ASSEMBLY



Index Num-	Part Num-	Description	Qty	Index Number	Part Number	Description	Qty Req
1*	017106	Knotter Head Assembly	1	16	100370	Screw, 10-24 X 3/16 Soc Set Cup	1
2**	017086	Knotter Head Sub-Assembly	1	17	100009	Screw, Knotter Lever	1
3	013085	Bearing, Knotter Head Roller	1	18	032068	Lever, Knotter	1
4	100528	Nut, Knotter Head Bearing	1	19***	017103	Knotter Body & Miter Gear	1
5	081022	Stud, Tip Up Link	1	20	100575	O Ring, Knotter Body and Starwheel	4
6	020156	Starwheel & Miter Gear Assy Plated	1	21	100571	O Ring Stainless Steel Spacer	1
7	100372	Roll Pin, Miter Gears	2	22	011052	Pivot, Knotter Head (sold separately)	1
7a	N/A	Gear Miter- Not Sold Separately	2	23	100576	O Ring, Knotter Pivot	2
8	074006	Plunger Spring	1	24	100062	Cover, Ball Valve Oil Hole Gits	3
9	082003	Plunger, Knotter Lock	1	25	100483	Pin, Roll	1
10	100150	Nut, 1/4 X 20NC, Hex Jam	1	26	126102	Spacer, Knotter Pivot	1
11	100187	Screw, Set Socket Head Dog Point 1/4-20 x 1	1	27	100115	Screw, 5/16-18x1	2
12	074013	Springs, Flat	2	28	100248	Nut, 5/16-18	2
13	100131	Washer, Flat	1	29	100287	Nut, Large loc 5/16-18	1
14	100143	Nut, 10-24NC Hex Zinc	1	30	100275	Screw, 5/16-18 x 3 1/4	1
15	100092	Screw, 10-24NC X 1 Round Head	1	31	100691	Thrust Washer, Knotter Pivot	1

* This is set for Bunn 16 Ply Twine. Other materials may not work properly.** Sub-Assembly includes Items 5,25. *** Includes Items 7a and 7